

FHSLA ALERT NEWSLETTER

Volume 17, Issue 2

late Winter '02 – Spring '03

<http://www.library.health.ufl.edu/fhsla/newsletters>

HEADLINES

President's Message	1-2
From the Editor	3
ALERT Annual Report	3
Updated PubMed Brochure	3
Workshop Review: EBM for Librarians	4
News	4, 5, 6, 11, 13, 19
NLM Gift Shop	4
AHIP Congrats!	6
SLA in NYC	6
New SC/MLA Website	6
Correction	6
Images of Librarians: Results	6
MLA in San Diego	7
FHSLA Member Awarded	
NLM Grant	8
JMLA Survey	8
MLA Colleague Connection	8
Maintaining a Routing Table	9
Marketing the Library to Physicians	10
Friendly Exchanges... Older Adults	10
Divine/Faxon/RoweCom	11
MEDLIB Listserv...	11
LibraryInstruction.com	11
Mentoring: Sharing...	12
Scholarships!	12
NASIG Annual Conference	13
Spotlight On... Grab-Bag	14
Weeding Party Idea	14
Article Alert	15
SC/MLA & FHSLA URL	16
Medical Digital Reference	16
Survey Input Needed	17
Publishing Opportunities	18
Online CE Courses	18
IFLA Meeting	18
FHSLA Member Dues	19
Electronic Tips & Tricks	20-21
Call for Papers/Posters	16, 20
Jobs!	21
Pub. Hist. & Contact Info	22
Membershin Annlication	23

President's Message

As the year progresses and this year's program chair, Karen Roth, is busy planning FHSLA 2003 I have been reflecting on last year and the planning and preparation for the annual 2002 meeting. The position of vice president / program chair is a very exciting, fun, interesting, challenging, rewarding and creative one. It is also frustrating, scary, time consuming and a great deal of work. It is a position that I thoroughly enjoyed and wouldn't have missed for anything! In case you have not had such a wonderful experience let me share some of it with you.

The first challenge is choosing a location and date for the event. So many variables affect your decision that it becomes mind boggling. When determining the date these are some of the variables that must be considered: when is MLA; when does the "tourist season" end and lower prices hotel rooms begin; when is Easter and Passover and any other; and will the date conflict with any other holidays such as Mother's Day or any other never thought of or heard of holidays? Finally you have a date and begin looking at location. The general location is determined by the hosting rotation, but that still needs to be narrowed down. The next challenge is choosing a hotel to host the meeting. This can involve some tricky negotiations and weighing of priorities and options. You are trying to obtain the best value and prices for the members and the hotel is trying to make as much profit as they are able. There are many phone calls, emails and faxes that are sent before a contract is signed. It helps if you view it as a game of strategy. Remember to get everything in writing so that if the need arises you can remind them of what they agreed to and the reverse that they can remind you!

Ok, so we have a date, we have a location and a contract with the hotel, is it time to sit back and relax? NO, the fun is just beginning! The meeting needs a theme. Vendors will have to be contacted to solicit donations. Local arrangements people must be chosen. Other committees and volunteers identified and located. The CE coordinator should begin choosing classes for the meeting and

informing you what facilities will be needed for the classes. Some members have asked about free CE classes, well there is not such thing as a free CE class. Hotels often charge fees for room rental. How much and how many rooms that you are charged for are things that are negotiable in the contract. The more that you guarantee spending on meals, snacks, liquor and the number of rooms that you have agreed to fill or pay for determines how much leverage you have to obtain “free” meeting rooms. Another consideration is what equipment the instructor will need. Plan on being charged between \$75-\$200 per connection per day for an Internet connection. Renting a LCD projector or laptop can easily cost over \$500 per day. Breaks are another item to consider, forget 50 cents for a cup of coffee. In nice hotel water, soda and coffee can easily run \$6-8 per person and cookies and other goodies can increase the cost per person to that of a moderately priced meal. Did you ever wonder why Southern Chapter and MLA charges for classes are so much higher than FHSLA? Their speakers come from all over, they are at the meeting for several days and they are paid well for their time. Because MLA uses so many rooms they are probably paying rental fees for most of the rooms that they use. By charging for all of the classes offered, FHSLA is able to bring in speakers and instructors that it could not normally afford. So it is a balancing act and there is no such thing as free CE, sorry.

At this stage the role of Program Chair changes into that of a director. The committees and volunteers should be busy working on the assignments and projects for the meeting and your job is to monitor progress, offer advice and support and provide resources that are needed. This is also the point where you wake up in the middle of the night and panic that no one will come to the meeting and that the financial ruin of the organization will be your entire fault. Who needs sleep anyway?

Finally the date of the meeting arrives. The committees have done a wonderful job. A record number of members have registered to attend. Vendor donations have exceeded even your wildest hopes, the number of guest rooms that you guaranteed the hotel to fill are all gone, all of the speakers and instructors have arrived, the accommodations are excellent and the weather is perfect. However things are going almost too perfectly so you get a little niggling in your stomach. You just know that you have forgotten something important or that something is about to go wrong like an early season hurricane is headed your way, but nothing happened because you have done a great job. Now is the time to put your feet up, but only for a few minutes, and relax with a nice glass of ice tea or beverage of your choice. Think about how wonderful all of the members, volunteers and committee members are that made it possible for you to put the meeting together, but don't sit for too long because you have a meeting to attend!

Well, enough of my rambling, Karen Roth and her committees are busy planning a great meeting in St. Petersburg Beach. If she asks you for assistance, please say yes. See you at the Tradewinds June 4-6 for another great annual meeting!

Pamela Sherwill-Navarro
FHSLA President
Pam@library.heath.ufl.edu



From the Editor

What a whirlwind of a year it's been! I had so much fun co-editing and then editing the ALERT, that at last year's annual meeting, I asked to keep it on for another term. (Usually, the ALERT rotates every three years between the USF Health Sciences Library, UF Health Sciences Library, and then U of M Louis Calder Memorial Library.) However, I had no idea that I'd soon be taking on additional, yet quite delightful, duties at U of M. Since the middle of 2002, I've been teaching evidence-based medicine to the first year medical students, and will also follow them as they enter their second year. It's not easy to write instructional materials for and grade assignments for a prospective 150 students at two different levels, but it is immensely satisfying. I never thought I could compile &/or write so much—about 250 pages worth. If it wasn't for the assistance I got from so many in all the U of M library departments, I don't know how I could've done it. While I knew when to ask for assistance and delegate when necessary, I didn't do that for the ALERT. I truly apologize for printing the second issue of the year so many months late. I had sufficient material to put out an issue a long time ago, but never found the time to put it all together. Optimist that I am, I kept thinking I'd somehow find the time "in just a few more days." Although I'm originally from Key Largo, I didn't intend to put out this ALERT on a "Keys schedule." 😊 In order to keep the ALERT on a smooth publication schedule, I'm stepping down as Editor. I'm sure our new Editor will have lots of fun putting out the ALERT; I certainly did. Thank you for having me as Editor. Hope to see you all at the MLA, SC/MLA, & FHSLA meetings!

--Tanya Feddern, tfeddern@caldmed.med.miami.edu, Editor

ALERT Annual Report

What was Accomplished

- Two issues of the ALERT were created and uploaded onto the FHSLA newsletter webpage, <http://www.library.health.ufl.edu/fhsla/newsletters/>.
- The Newsletter editor sections of the "FHSLA Policy and Procedure Manual," <http://www.library.health.ufl.edu/fhsla/about/index.html> were updated.
- One of last year's goals was to make the online ALERT issues available in both HTML and PDF formats so they'd be searchable on the World Wide Web. However, since many search engines seem to now search PDF documents, I consider this goal redundant. (Also, Adobe supposedly has fixed its accessibility problems and most home computer connections can now rapidly download PDF documents, another two reasons why I had wanted to make them available in HTML format.)
- I purchased the computer program, *Broderbund's PrintShop: Brochures, Newsletters, and More* to try out different newsletter layouts. The program also came with clipart. I ended up using some of the program's template ideas rather than an actual template. The next Editor may borrow the program to use for future ALERTs. The best clipart I've found comes from that program and from Microsoft Office: Design Gallery Live, <http://dgl.microsoft.com/?CAG=1>.

Future Goals

- The FHSLA ALERT digitization project at the University of Florida is currently on hold due to staffing constraints. If anyone would like to help digitize FHSLA history (i.e. scanning old issues), please contact Tara Cataldo at 352-392-1390 or e-mail her at tara@library.health.ufl.edu.
- Additional future goals will be set by the next Editor. Tanya Feddern, ALERT Editor, is regretfully stepping down, as her expanded job duties do not allow time for the ALERT to be published in a timely manner.

Updated PubMed Trifold Brochure

Direct URL: <http://nmlm.gov/nmlm/online/pubmed/pmtri.pdf>

Additional updated NLM brochures are available at <http://nmlm.gov/train/>

Workshop Review: EBM for Librarians— Appraising the Evidence for Validity

A few weeks ago, I attended a wonderful workshop on critical appraisal at the University of Illinois at Chicago,

<http://www.uic.edu/depts/lib/news/archive/2003/feature0021.shtml>. It was team-taught by three librarians, (**Sandra De Groot**, **Martin Brennan**, **Marci Doranski**), and three clinicians (2 MDs and a neuropsychologist), **Jordan Hupert**, **Jerry Niederman**, and **Alan Schwartz**.

Some of those clinicians may sound familiar. Dr. Schwartz is the creator of the fabulous EBM calculators at

<http://araw.mede.uic.edu/~alansz/tools.html>. Drs. Schwartz and Hupert also wrote the recent BMJ article, “[Medical Students’ Application of Published Evidence: Randomised Trial](#).”

Participants in the course were given a binder with copies of several articles and PowerPoint presentations as well as the Sackett book, *Evidence-Based Medicine: How to Practice and Teach EBM*. We also formed groups, each with an instructor, to create a CAT (a one-page critical appraisal) for the articles.

The course was wonderful because it covered the **advanced** aspects of critical appraisal of diagnosis and therapy articles. The presenters were quite knowledgeable and answered our questions in terms we could understand. If the Library of Health Sciences at UIC offers this workshop again, I highly recommend going.

--Tanya Feddern, tfeddern@med.miami.edu,
University of Miami, Calder Memorial Library

ORH News

Rebecca Harrington of Orlando Regional Healthcare Corporate Library Services has accepted the position as the librarian for the MCRG Patient & Family Learning Center in the new M. D. Anderson Cancer Center, Orlando. The MCRG Patient & Family Learning Center is a cancer specialty library which will serve the patients, their visitors and the community. Rebecca received her MLS from the FSU School

of Information Studies. She has been on staff at the Health Sciences Library at Orlando Regional Healthcare for the past few months.

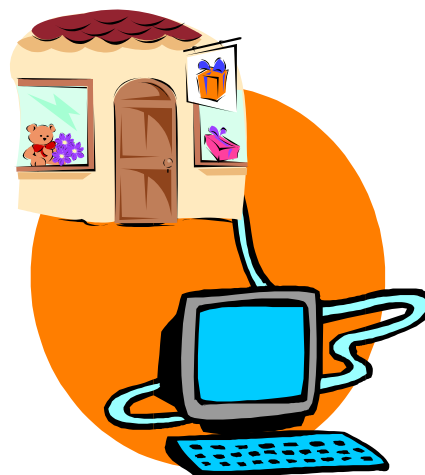
Congratulations Rebecca.

--Naomi Eli, NAOMIE@orhs.org, Orlando Regional Healthcare

NLM Gift Shop

Have you ever wanted to order National Library of Medicine (NLM) logo products, for your personal use, to give as a gift, or to hand out at meetings? NLM is now making these products available for purchase through the Recreation and Welfare (R&W) stores at the National Institutes of Health (NIH). The wide range of products available—hats, shirts, mugs, pens, etc.—can be seen at <http://www.nlmgiftshop.org/>. You can even order online with a VISA card. Your order will be processed within 7-10 working days. New products will be added over time, so please check the site often. If you have specific suggestions or questions about this program, contact: Karen Hajarian, Director of Promotions, National Library of Medicine, 8600 Rockville Pike, Bethesda, MD 20894, (301) 402-4277, or at hajarian@nlm.nih.gov.

--Tammy Mays, tmays@uic.edu, Library of the Health Sciences, University of Illinois at Chicago



News: UF Health Science Center Libraries

Beth Layton, Deputy Director of the Health Science Center Library at George Washington University Medical Center has accepted the position of Deputy Director of the University of Florida Health Science Center Library. She held a similar position at George Washington University's Medical Center Library in Washington D.C. Initially Beth is responsible for Access Services and Systems. She also will lead the facility renovation planning that will begin this year (2003).

Nancy Schaefer and **Linda Butson** have been training county Public Health workers in the Big Bend AHEC area of Florida to search for medical information using PubMed, MedlinePlus, and the Internet as part of a NLM subcontract.

Pam Neumann has been appointed to serve as the Co-Chair of the Continuing Medical Education (CME) Advisory Committee of the University of Florida College of Medicine. The committee is made up of members on both the Gainesville and Jacksonville campuses. She is the first non-physician from the Jacksonville campus to serve in this role. She also attended the Florida ACRL (American College and Research Libraries) meeting in Orlando on October 18, 2002. This one day conference included sessions on grant writing, faculty/librarian collaboration, joint use facilities and information literacy.

Linda Butson and **Nancy Schaefer** co-authored a poster, *Developing Internet Savvy in Florida's Rural County Public Health Workers* which was exhibited at the Florida Public Health Association /Florida Environmental Health Association/ CASE's Joint Annual Educational Meeting and Trade Show in Tampa, FL from July 23-26, 2002. They attended the American Public Health Association meeting in Philadelphia, PA from November 10-13, 2002. **Linda Butson** also attended the statewide AHEC conference in Coconut Grove, FL from November 6-8, 2002.

Faith Meakin, **Linda Butson**, **Beth Layton**, and **Rae Jesano** from the HSC Libraries UF

Gainesville attended SC/MLA in Nashville, TN from October 17-20, 2002. **Sandra Canham** from the Borland Health Sciences Library Jacksonville Campus of UF also attended. **Faith Meakin** attended AAHSL /AAMC meeting in San Francisco, CA, from November 8-12, 2002. Faith is MLA's representative to AAHSL. She is also one of three UF representatives to the AAMC's Group on Institutional Resources (GIR).

Cecilia Botero, **Rae Jesano**, and **Peggy Hsu** represented the UF Health Science Center Library at the state- wide Florida Center for Library Automation (FCLA) Meeting in Gainesville, FL, on November 18, 2002 through November 20, 2002. **Beth Layton**, **Lenny Rhine**, and **Bill Kuntz** attended portions of the conference pertinent to their areas of the library. Implementation of the new Library Management System (LMS) for all the state universities and community colleges was the topic of discussion.

Southern Chapter/MLA in 2002 included four posters with authors from UF's Health Science Center Library:

Linda C. Butson, **Deborah Hynes**, **Sharon Schmidt**, **Nancy Schaefer**. *A Guide to Working Smarter: Introducing the Internet to Florida's Health Professionals.*

Lyn Dennison, **Jan H. LaBeause**, **Karen W. Rosati**, **Faith Meakin**, **BJ Schorre**, **Walter Morton**. *LibQUAL+™ Southern Style.*

Rae Jesano, **Nita Ferree**, **Pamela Sherwill-Navarro**. *Transitions: Challenged to Change: Librarians on the Move - From Public and Hospital to an Academic Health Sciences Library.*

Pamela Sherwill-Navarro, **Dwight Bennett**, **Linda Butson**. *The Development of a Virtual Library Tour: Health Science Center Libraries, University of Florida, Gainesville.*

--Rae Jesano, rae@library.health.ufl.edu, Health Science Center Libraries, University of Florida

News: NSU HPD Library

Mary Lawrence attended the online ACRL Online Lyceum 5-week course, "Licensing Review and Negotiation" from February to March 2003.

--Mary Lawrence, marylaw@nova.edu, Health Professions Division Library, Nova Southeastern University

AHIP Congratulations!



Geddy Paulaitis became an AHIP Member, while **Tanya Feddern** became a Provisional Member. Congratulations!

Go to <http://www.mlanet.org/academy/index.html> for further information about the Academy of Health

Information Professionals (AHIP) from the Medical Library Association (MLA).

SLA in NYC

The Special Libraries Association's annual meeting will be in New York City from June 7-12, 2003. Details and registration information are at:

<http://www.sla.org/content/Events/conference/2003annual/index.cfm>.



News: Shimberg Health Sciences Library

Beverly Shattuck, **Rose Bland**, **Allison Howard**, **Lee Ann Howlett**, and **JoElla Young** attended the Southern Chapter/MLA Annual Meeting in Nashville, October 17-20, 2002. **Allison Howard** and **Rose Bland** co-authored a paper, *How Librarians Can Collaborate Together to Publish (and Survive!)*, and a poster, *Librarians and Vendors Collaborating Together to Measure Electronic Resource Usage*.

Congratulations to Education Librarian **John Orriola**, the 2002 recipient of Southern Chapter's

\$1,000 Annual Research Award for his project, Strategic Competency-based Incremental Literature Searching Instruction for the Medical Student. John will have assistance on this project from **Ellen E. Stanley**, who is scheduled to graduate December 2002 from USF's School of Library and Information Science. This SC/MLA grant is the first step in embarking on this exciting research project. Good luck, John and Ellen!

The **Shimberg Health Sciences Library** celebrated National Medical Librarians Month this past October. Several attractive displays were created to promote the Library's staff and services. Visitors were treated to Halloween candy and chocolate. The successful month-long event was publicized in the Health Sciences Center's newsletter, via email bulletins, and on the Library's website.

--Karen Keene, kkeene@hsc.usf.edu, Shimberg Health Sciences Library, University of South Florida

Correction

The article in the [Spring 2002 issue](#), **2002 Student Scholarship Experience**, was written by **Rebecca Harrington**. The Editor apologizes for the omission.

Images of Librarians: Survey Results

Remember a few months ago I sent out a survey [to various librarian listservs] about the image of librarians? Many of you answered it and I appreciate that a lot. My friend who was collecting the data gave her report at the Special Libraries Association (SLA) [in 2002] and it was greeted with rave reviews. She has put her presentation on-line and I heartily recommend everyone looking at it. It is great!!

<http://atst.nso.edu/library/perception/>

--Amy Hale-Janeke, ahale@sdcll.org, San Diego County Public Law Library, (in CA)

Get Ready for the FHSLA Annual Meeting

The FHSLA Annual Meeting 2003 promises to be an exciting experience! Situated right on the Gulf of Mexico on St. Pete Beach, The TradeWinds Island Grande Resort is a wonderful setting for the conference. You might let yourself be distracted by the miles of sandy beaches right outside your room, or by the many restaurants offering a wide variety of dining styles and selections, from pasta, seafood and beef at the Palm Court Bistro, to nachos, wings and grouper sandwiches at the Flying Bridge. Or you might just let yourself go in the whirlpools, swimming pools, kayaks, Hobie Crafts, parasailing, snorkeling, shelling and dolphin watch cruises... The weather's perfect, and the hurricanes haven't started yet. If you can tear yourself away from all that – attend the many lectures, presentations and offerings of FHSLA 2003, June 4 – 6, 2003.

Check out the photo gallery at:

http://www.tradewindsresort.com/media_photo.cfm

Did you receive your brochures, registration forms in the mail? Let us know if you didn't. Registration forms are also available at the FHSLA 2003 Meeting website:

<http://www.library.health.ufl.edu/fhsla/conferences/annual2003.html>

--John Orriola, jorriola@HSC.USF.EDU, Shimberg Health Sciences Library, University of South Florida

MLA in San Diego

The 2003 National Program Committee invites you to hang-ten with your fellow surfers. As MLA President Linda A. Watson, AHIP, said in her 2002/03 inaugural address, librarians need to be "extreme," taking new paths to providing quality health care information and services. Member contributions and vendor exhibits will showcase innovative approaches and strategies to meet the turbulent waves of the future.

The John P. McGovern Lecture, which opens the meeting, will be delivered by Lawrence Lessig, J.D., a Stanford law professor recognized nationally for his knowledge of intellectual property and his ability to guide the novice and the expert through the maze of copyright and fair use. The contributed paper and poster sessions include the new publishing paradigm; library exhibits; equitable access to information; forecasts of technology trends; services and information needs for underserved health professionals; outreach services for at-risk, underserved consumer populations; and creative uses of new technologies. The annual meeting will conclude with a half-day session on mentoring with Karen Garman, Ph.D., as the plenary speaker. This session is the first joint chapter and section programming effort at an annual meeting.

In addition, the Town and Country Resort & Convention Center lends itself to outside, unstructured activities. We hope you will take advantage of the site's informal atmosphere and casual dress code to share your knowledge and experience with colleagues. We have planned a number of new venues for idea exchanges. Xtreme Rides will feature presentations and discussions on late-breaking topics. Informal California Chats will be predinner, poolside discussions on a variety of issues that surface during the meeting.

San Diego (<http://www.sandiego.org/>) is also a wonderful city to visit with your family. SeaWorld, the San Diego Wild Animal Park, the San Diego Zoo, Old Town, and even Tijuana, Mexico, are close enough for a day trip.

Cowabunga! See you in San Diego!

Check the MLA website for details. For information on the program, continuing education, registration, volunteering, and much more, go to <http://www.mlanet.org/am/am2003/index.html>.

-- Gail A. Yokote, AHIP, and Ysabel Bertolucci, AHIP
2003 National Program Committee Co-chairs

FHSLA Member Awarded NLM Grant

Congratulations to Dr. Dee for attaining a grant for this important topic! Details about the grant follow:

Access to Electronic Health Information
Projects Funded by the National Library of Medicine, 2003

Florida University of South Florida School of Library and Information Science Tampa, FL

Project Director: **Cheryl Rae Dee**

Phone: 813-974-6361; FAX: 941-688-9829

cdee@chum1.cas.usf.edu

This project will directly teach seniors to gather medical information independently, train public librarians to teach seniors about medical searching and begin to gather information about the medical information needs and medical information seeking behavior of senior citizens. The Polk County Library Cooperative, Lakeland Public Library and Day Treatment Program of Peach River Center in central Florida will partner for the project. [from <http://www.nlm.nih.gov/news/ehealth4public.html>]

-- Addajane L. Wallace, addajane.wallace@halifax.org, Halifax Medical Center

MLA Colleague Connection

The value of a professional network cannot be measured. If you are a solo librarian and need advice or support, your professional network is where you should turn. If you're contemplating a career change, a promotion, or volunteering within the association, the people in your professional network can help steer you in the right direction.

Of course, the best time to begin to develop your professional network is when you first join MLA. For this reason, the Colleague Connection was created. This popular program, sponsored by MLA's Membership Committee, pairs new members or first-time meeting attendees with more experienced members. Once assigned, each pair of colleagues works out their own meeting schedule. Colleague Connection is about developing lifelong friendships with your peers and being warmly welcomed to your first Medical Library Association meeting. We challenge you to dare to meet new colleagues and build your professional network! Ten years from now you'll be glad you did!

If you are interested in participating, please contact Rosalind Lett at Rosalind.k.lett@Vanderbilt.edu or call 615-936-3103. Indicate whether you want to be paired with an experienced member or want to help a new colleague. The deadline is **April 14, 2003**.

--Rosalind Lett, rosalind.k.lett@vanderbilt.edu,

JMLA Survey

There is a JMLA Readership survey posted at <http://www.mlanet.org/survey/index.html>. It will be available until **April 4**. Please encourage members of your sections to follow this link and participate. The link has also been posted on the MLANET homepage at <http://mlanet.org/> and the Section Council web site at <http://scouncil.mlanet.org/>. Please take a few minutes to let MLA know how you use the Journal!

--Norma Field Funkhouser, MLIS, AHIP, n-funkhouser@tamu.edu, MLA Section Council Chair, Medical Sciences Library, Texas A&M University

New SC/MLA Website

<http://www.mc.vanderbilt.edu/biolib/scmla/>

Maintaining a Routing Table in DOCLINE

The Routing Table is a pivotal part of the DOCLINE program. When a request is entered, the routing table is used to automatically route the request to holding libraries, randomly within sequential cells. (Library holdings are found by searching titles in SERHOLD. Every library in DOCLINE decides which libraries are included in their routing table and in what order, though some of the choices are dictated by consortial agreements.

The routing table consists of nine cells, each of which hold up to 20 libraries. Within the cells, libraries are arranged alphabetically by their LIBIDs. The table is located in the Interlibrary Loan section of your DOCUSER record. The main goals of your routing table are to first borrow locally and reciprocally, then from EFTS member libraries, then borrow within consortia/library groups and lastly borrow more broadly from non-EFTS charging Resource Libraries. The DOCLINE system balances borrowing among EFTS group members, keeping billing and check cutting to a minimum. Some of the rudiments have changed since the online system introduced the checkbox for forwarding to Resource Libraries, nationwide, and forwarding on after NLM. You may wish to reconsider these check boxes if you find your requests forwarded to non-EFTS libraries.

Review the routing table at least annually. Libraries that are included may need to be moved up or down in the table according to EFTS participation, cost and volume usage. Others that have merged or closed will be indicated by [*flumbe*] and lowercase LIBIDs, remove them.

Maintaining a routing table is a logical process requiring some searching and printing from SERHOLD, also a printout of EFTS members from DOCUSER, and a print copy of your current table. Once you have the documentation, assemble a list of libraries that are currently being used or EFTS libraries that should be used, then divide these libraries into categories:

EFTS libraries that charge and libraries that do not.

- Place free EFTS libraries in the first cells of the table and charging ones in the later cells.
- Consider adding "Reciprocal Libraries." These libraries will be reciprocally free to other libraries, as in FreeShare and some consortia.
- Additionally, libraries that charge less, e.g. \$5, should be placed before libraries that charge more, e.g. \$11.

Large libraries and small ones

Put smaller EFTS libraries first so they can participate in lending, thereby offsetting their borrowing and evening out their cost.

Libraries that offer a preferred delivery method and ones that do not

Put EFTS libraries which use fax, Ariel or e-mail as their primary delivery method early in the table, if those delivery methods are desired.

Special collections

If special collections are needed on a regular basis, find EFTS libraries that meet these needs and add them to your table, e.g. pediatric hospitals would put in other pediatric hospitals.

Regional Medical Library (RML)

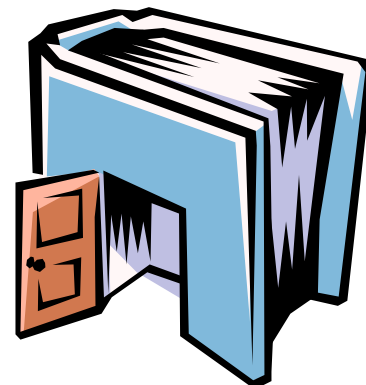
The RML (University of Maryland Baltimore, HSHSL, LIBID: MDUMDB) is placed in the last library-specified cell (cell 9) for all Primary Access Libraries in the region. Resource Libraries are free to put the RML in any of their cells.

Reminder: it's good practice to ask before adding an out-of-region EFTS library and FreeShare partners.

--Beth Wescott, bwescott@hshsl.umaryland.edu,
Health Sciences and Human Services Library,
University of Maryland

Marketing the Library to Physicians

In response to my [Medlib] posting on how medical libraries can market their services to physicians, I am summarizing the responses I received:



- Attend meetings such as rounds, strategic planning meetings, monthly wrap-ups, medical departmental meetings, etc. in order to raise awareness that the library can provide information
- Put together a looseleaf manual of library information for each nursing station that includes reminders of reference & ILL services, as well as new acquisitions
- Attend orientation meetings for medical students, interns and residents
- Include library items in the hospital newsletter
- Host a library open house (for example, during National Medical Library Month)
- Offer training to physicians on a particular topic (such as PDAs)
- Offer and promote a Table of Contents service
- Promote physician book discounts through vendors such as Rittenhouse
- Provide a CME locator service (both online and physical conferences)
- Put a box or wall pockets in medical staff services or physician's lounge with "hot" articles in the news (like HRT) or other information such as list of library journals, MDConsult info, etc.
- Include a wall pocket in the physician's lounge with library search request forms
- Place a computerized form for requesting literature searches on the hospital Intranet
- Attach "article request" notes to articles sent to physicians (with library name, number, email & fax)
- Offer support for palm pilots
- Find out topics that are being discussed at grand rounds and do weblibliographies or bibliographies on the topics
- Talk to ER staff and find out what kind of material they'd like to have on hand for ER patients (ex: info for victims of domestic abuse)
- Offer info on consumer health (bibliographies & weblibliographies on popular topics: Alzheimers, diabetes, breast cancer, info for support groups)
- Prepare bibliographic instruction programs for any nurses who are pursuing degrees
- One more idea that I had: we recently got an on-line subscription to the Up-To-Date database, and I've passed a copy of the "What's New" feature in different subspecialties to several of the physicians in those areas

Hope the above gives you all some creative ideas! Thanks to all who responded!

--Ann Ferrari, ferrariann@hotmail.com, Behan Health Science Library, Jefferson Regional Medical Center (in PA)

Friendly Exchanges at the Reference Desk with Older Adults

Dear Friends at the Reference Desk,

Do you recall any particularly good exchanges with older adults at the reference desk where you serve? I am drafting an article for submission to American Libraries, and I am particularly interested in quoting reference librarians who have examples of good "bedside manner" (warm and friendly) interactions at the desk. Your name and affiliation would be quoted in the article.

Please send interesting tidbits to the following: c-hale@tc.umn.edu

Thank you!

--Celia Hales Mabry, c-hale@tc.umn.edu, University of Minnesota Libraries (in MN)

Divine/Faxon/RoweCom

MLA has a webpage dedicated to the divine/Faxon/RoweCom situation. Visit the divine/Faxon/RoweCom Information site: http://www.mlanet.org/resources/faxrowe_updates.html

MEDLIB Listserv: Around the World in 80 Seconds

Medlib listserv members span the globe. To see the list of represented countries and regions (51 in all), go to the November 2002 posting by Valerie Rankow, listserv moderator: "CHAT: Where do MEDLIB-L subscribers live? Revised" <http://listserv.buffalo.edu/cgi-bin/wa?A2=ind0211c&L=medlib-l&T=0&F=&S=&P=11217>



News: Baptist Health South Florida

Devica Samsundar graduated from the Florida State University School of Information Studies with her Masters degree and was promoted to the position of Electronic Resources Librarian for Baptist Health South Florida. If you ever want to know anything about the FSU distance learning program, contact her at devicas@baptisthealth.net.

Miami Health Sciences Library Consortium

new officers for 2003 are: Chair, **Devica Samsundar**, Electronic Resources Librarian at Baptist Health South Florida; Vice-Chair/Chair-elect **Jean Garrison**, Library and CME Coordinator, Mercy Hospital; Secretary, **Iris Cusine**, Library and CME Coordinator, Palmetto General Hospital; and Treasurer, **Carrie**

Figueredo, Beckman-Coulter, Senior Library Assistant. The consortium is looking forward to supporting the upcoming meeting of MLA's Southern Chapter in the Fall of 2003, in nearby Coral Gables, FL.

-- Diane Rourke, dianer@baptisthealth.org, Baptist Health South Florida

LibraryInstruction.com

I am happy to announce LibraryInstruction.Com (<http://www.libraryinstruction.com>). I have created this site with the intent of providing useful resources to my colleagues engaged in library instruction around the world. This site contains library instruction lesson plans, articles about library instruction, and links to library instruction resources. As of the launch of this site in late 2002, only the links to resources has a lot of content. I have added two of my lesson plans and several of my articles to the lesson plan and articles pages. I hope to add more myself in the future.

This site will work best if others contribute. Here is what I am asking:

1. Please send me any articles you have written that deal with library instruction issues. (Obviously, only do this if you still retain the copyright to them!) I will create a page for them at this site and link to it from the article page. You will retain the copyright to your work.
2. Please send me any library instruction lesson plans you have written. These can be for any level of student. I will create a page for them at this site and link to it from the lesson plan page. You will retain the copyright to your work.
3. If you know of any web resources that should be included in the links page, please let me know.

Full details are at:

<http://www.libraryinstruction.com>. Please e-mail me at support@libraryinstruction.com with any contributions. Thank you.

--Michael Lorenzen,
support@libraryinstruction.com, Head of Reference Services, Central Michigan University

Mentoring: Sharing Experiences for Professional Growth

Mentoring has become a national movement in business and industry as organizations strive to insure recruitment, retention and productivity of talented employees. Librarians who have traditionally sought talented and respected colleagues to share opinions and experiences in an informal manner are experiencing the need to explore more formal approaches to mentoring as we continue to recruit new members to our profession.

This year at the MLA Annual Meeting in San Diego, there will be a three-hour program on Wednesday, May 7 from 9 a.m. to 12 noon where members can learn about and discuss how to further develop, implement and maintain mentoring activities in our organization. The committee responsible for planning this program is the first to be composed of members from both Section Council (Stephen Greenberg, Jett McCann, Tovah Reis) and Chapter Council (Irene Lovas, Paula Raimondo, Debbie Sibley). Consultant Karen Garman, Ed.D., who spoke at the November 2001 joint meeting of the Association of Academic Health Sciences Librarians (AAHSL) and the Association of American Medical Colleges (AAMC), will set the stage for the program by providing an overview of mentoring. Dr. Garman is a nationally-recognized speaker and consultant who specializes in the fields of mentoring, healthcare education, leadership and performance.

To share some of their unique experiences of professional growth, a distinguished panel of health sciences librarians including Sue Trombley, from the Arizona Health Sciences Library in Tucson, Ruth Holst, currently the associate director, NN/LM Greater Midwest Region, and Rick Forsman, director of the Denison Memorial Library at the University of Colorado Health Sciences Center will bring their perspectives of mentoring to the discussion. Sue is a recent graduate, Ruth is at mid-career and a former hospital librarian who has been and has mentored, and Rick is a "senior" librarian who has mentored librarians throughout his career. A Town Meeting will cap off the morning. This will be the time for everyone to express opinions, to offer ideas and thoughts, and to ask any questions about mentoring. It will be an opportunity for MLA members to hear about the mentoring activities of MLA, its Sections and Chapters, and other professional associations and organizations. The Town Meeting will be the place to continue planning mentoring initiatives for our professional organization. Before the Annual Meeting, there will be opportunities for you to assist the Committee in planning the Town Meeting. A bibliography of mentoring resources will be posted on MLANet. There will be a place on MLANet to post suggestions, comments and questions to be addressed at the Town Meeting. You also can email any ideas or questions to either Irene Lovas Irene.Lovas@cshs.org or Tovah Reis Tovah_Reis@brown.edu. Please take this opportunity to participate as the MLA membership continues to develop and implement mentoring activities for future health sciences librarians.

--Irene Lovas and Tovah Reis, Co-Chairs, MLA Joint Section/Chapter Councils Committee for MLA 2003

Scholarships!



The SC/MLA is offering numerous scholarships—many are due as early as **August 1st**. Don't miss out! Go to <http://www.scmla.org> and click on "Grants and Awards."

The 2003 Roger K. Summit Scholarship is being offered by The Dialog Corporation for \$5,000. The award will be presented at the June Special Libraries Association Conference in New York, NY. The test and application form are at the GEP web site at <http://training.dialog.com/gep/scholarship.html>. **Deadline is April 30, 2003.**

News: UM

Carmen Bou Rivera and **Amy Brennan** from the University of Miami Pomerance Library & Resource Center (with **Rebecca Abromitis**, U. Pittsburgh Western Psychiatric Institute & Clinic), published an article, *Building a Web Site for Mental Health Librarians*, in the journal *Behavioral & Social Sciences Librarian* vol. 21, number 1, 2002, pp. 37-49. The article details the planning, implementation and maintenance involved in the creation of the Medical Library Association Mental Health Special Interest Group Web site located at <http://www.miami.edu/mhsig>.

Joaquin Arriaga was a co-convenor of the Problem-Based Learning Special Interest Group's meeting at the Medical Library Association (MLA) Annual Meeting in Dallas, TX in May 2002.

Suzetta Burrows gave a presentation, *Accessing E-Journals*, at the Retreat of the academic library directors of the [Consortium of Biomedical Libraries of the South](#) (CONBLS), in Memphis, TN in April 2002.

Tanya Feddern was certified by the MLA and accepted as a Provisional Member of its Academy of Health Information Professionals (AHIP) in May 2002. Together with **Kristine Alpi** and **Barbara Bibel**, their syllabus for an MLA course, *Providing Health Information Resources and Services in other Languages*, was approved for 8 hours of CE credit. (This course will be taught at MLA in May '03 in San Diego and at the SC/MLA in October '03 in Coral Gables.) Lastly, she attended the two-day workshop, "EBM for Librarians: Appraising the Evidence for Validity," held at the Library of Health Sciences of the University of Illinois at Chicago in March 13-14, 2003.

Yanira Garcia-Barcena and **Joaquin Arriaga**, in conjunction with the University's Animal Care and Use Committee, sponsored online training sessions for faculty on Searching for Animal

Studies and Alternatives Using Biological Abstracts on August 21 and 22, 2002.

Henry L. Lemkau, Jr. and **Suzetta Burrows** gave a 2-hour presentation on the *Evidence-Based Medicine Longitudinal Theme of the New Outcomes-based Curriculum at the School of Medicine* at the CONBLS Retreat in Memphis, TN in April 2002. A paper invited and published (in January 2003) by the *Journal of the Medical Library Association* is authored by **S. Burrows, K. Moore, J. Arriaga, G. Paulaitis, and H. Lemkau**. Lemkau was appointed Chair of the Local Arrangements Committee for the October 2003 Annual Meeting of the Southern Chapter/MLA in Coral Gables.

Gediminas Paulaitis was certified by the Medical Library Association and accepted as a Member of the Academy of Health Information Professionals (AHIP) in September 2002.

The **Department of the Library and Biomedical Communications** played a major role in the University of Miami Medical School's 50th Anniversary Symposium on January 31, 2003. A Five Decade Exhibit on the history of the School of Medicine was conceived, planned and implemented by the Department beginning in 2002. The five decade exhibit was on display in the Library's first floor atrium.

--Carmen Bou Rivera, crivera@med.miami.edu, Pomerance Library, University of Miami, and Suzetta Burrows, sburrows@med.miami.edu, Calder Memorial Library, University of Miami

NASIG 2003: Serials in the Park Conference

The 18th Annual Conference of the North American Serials Interest Group will be held June 26-29, 2003, at Portland State University, Portland, OR. The conference website is at <http://www.nasig.org/conference/>.

Spotlight On: Grab-Bag

Ah, the mystery of a grab-bag, what's inside? Could be anything, but something will definitely be of interest, click on the links and see...

Optometric Highlights

<http://www.nova.edu/cwis/hpdlibrary/pdf/olh.pdf>

An Annotated Guide to Indexes and Abstracts

<http://www.inf.aber.ac.uk/tpl/guides/indexeslist.asp>

Evidence that Changed Medical Practice

<http://hsc.usf.edu/~bdjulbeg/oncology/practice-change.htm>

A Su Salud: Health Information in Spanish

<http://www.stcc.cc.tx.us/lrc/library/webdirectory/asusalud.htm>

Agreement on Guidelines for Classroom Copying in Not-For-Profit Educational Institutions with Respect to Books and Periodicals

<http://www.musiclibraryassoc.org/Copyright/guidebks.htm>

Consumer Health: an Online Manual

<http://www.nlm.gov/scr/conhlth/manualidx.htm>

Evidence-based Practice in Disability Support Services

<http://www.nzgg.org.nz/disability.cfm>

Let's Play [MeSH] Hangman!

English MeSH <http://decs.bvs.br/l/homepagei.htm> click on "DeCS Search" and "Let's Play Hangman!"

Portuguese MeSH <http://decs.bvs.br/> click on "Consulta ao DeCS" and "Jogo da Forca!"

Spanish MeSH <http://decs.bvs.br/E/homepagee.htm> click on "Consulta al DeCS" and "Juego del Ahorcado"

EBM, Research, & Scientific Humor

<http://www.geocities.com/nqiya/libraryarticles.html#Humor>

<http://www.geocities.com/nqiya/Miscellaneous.html#Satire>

--Tanya T. Feddern, tfeddern@caldmed.med.miami.edu, Louis Calder Memorial Library, University of Miami School of Medicine

Weeding Party Idea

Last year during our pre-week, our director scheduled a Weeding Party to which all faculty were invited. We served a continental breakfast (sweet rolls, bagels, fruit, juices, coffee, etc., and then assigned each faculty member a section of the collection matching their instructional field (we had layouts of the shelves with call number ranges and highlighted the area assigned to each faculty member) and asked them to go through that section and pull any materials they felt were dated and no longer relevant to their field. Each faculty member was given a pad of post-it notes and a pencil and asked to put a post-it note with their name on any item they pulled so we would know with whom to check if we had questions about the removal of the item.

We are a small school (under 1000 students and a faculty of about 40), but we had about 90% participation by faculty and they weeded over 1000 books from the collection. We then went through the items weeded to double-check them and only a very small number were returned to the collection. The faculty seemed to enjoy it and became a lot more knowledgeable about the collection as well.

--Kathy Salgado, Kathy.Salgado@KMCNETWORK.ORG, Kettering College of Medical Arts (in OH)

Article Alert

Thanks to alert readers in various librarian listservs.

Berner ES, McGowan JJ, Hardin JM, Spooner SA, Raszka WV Jr, Berkow RL. [A model for assessing information retrieval and application skills of medical students](#). Acad Med. 2002 Jun;77(6):547-51.

Bou Rivera C, Abromitis R, Brannan A. Building a web site for mental health librarians. [Behavioral & Social Sciences Librarian](#). 2002;21(1):37-49.

Burrows S, Moore K, Arriaga J, Paulaitis G, Lemkau HL Jr. [Developing an "evidence-based medicine and use of the biomedical literature" component as a longitudinal theme of an outcomes-based medical school curriculum: year 1](#). J Med Libr Assoc. 2003 Jan;91(1):34-41.

[EBM: unmasking the ugly truth. Clinicians for the Restoration of Autonomous Practice \(CRAP\) Writing Group](#). BMJ. 2002 Dec 21;325(7378):1496-8.

Epstein RH. [Sifting through the online medical jumble](#). New York Times. Jan. 28, 2003.

Foster, E. [Open with caution](#). InfoWorld. Aug 9, 2002.

Grandage KK, Slawson DC, Shaughnessy AF. [When less is more: a practical approach to searching for evidence-based answers](#). J Med Libr Assoc. 2002 Jul;90(3):298-304.

Gray GE, Gray LK. [Evidence-based medicine: Applications in dietetic practice](#). J Am Diet Assoc 2002 Sept;102(9):1263-1272.

Homan JM. [The role of medical librarians in reducing medical errors](#). HealthLeaders Online. Sept 16, 2002.

Horwitz NH. [National Library of Medicine](#). Neurosurgery. 2002 Nov;51(5):1304-12; discussion 1312-4.

Janke RG. [Current Contents Connect and PubMed--a comparison of content and currency](#). Health Info Libr J. 2002 Dec;19(4):230-2.

Marriott R. [Yes, but how do we know if it's working? Evidence regarding impact on clinical practice of access for health service staff to bibliographic databases and full text electronic journals](#). Library Review. 2002;51(7):358-63.

Masys DR. [Effects of current and future information technologies on the health care workforce](#). Health Aff (Millwood). 2002 Sep-Oct;21(5):33-41.

McGrory D. [Library responds to surgeons' 3am plea](#). Times (London). Oct. 19, 2002.

Montgomery CH, King DW. [Comparing library and user related costs of print and electronic journal collections: A first step towards a comprehensive analysis](#). D-Lib Magazine. 2002 Oct;8(10).

O'Connor P. [Determining the impact of health library services on patient care: a review of the literature](#). Health Info Libr J. 2002 Mar;19(1):1-13.

O'Neil J. [Perils in the language of medicine](#). New York Times. 2003 January 7: F7 (col. 5).

Parker-Pope T. Research for hire: Firms help patients find latest cures for chronic illnesses. [Wall Street Journal](#). Nov. 26, 2002. URL mentioned in article: http://www.cancerguide.org/search_service.html

Ramos KD, Schafer S, Tracz SM. [Validation of the Fresno test of competence in evidence based medicine](#). BMJ. 2003 Feb 8;326(7384):319-21.

Schwartz A, Hupert J. [Medical students' application of published evidence: randomised trial](#). BMJ. 2003 Mar 8;326(7388):536-8.

Sood SK. [Effective retrieval of Lyme disease information on the Web](#). Clin Infect Dis. 2002 Aug 15;35(4):451-64.

Stanford Persuasive Technology Lab. [How Do People Evaluate a Web Site's Credibility? Results from a Large Study](#). revised Nov. 11, 2002.

Stewart MG, Koppersmith RB, Moore AS. Searching the medical literature on the Internet. Otolaryngol Clin North Am. 2002 Dec;35(6):1163-1174.

Ullrich PF Jr, Vaccaro AR. [Patient education on the internet: opportunities and pitfalls](#). Spine. 2002 Apr 1;27(7):E185-8.

Vaidhyanathan S. [Copyright as cudgel](#). The Chronicle of Higher Education. Aug 2, 2002; Page B7.

Verrengia JB. [Science journals to join fight against terrorists](#). Washington Post. Feb. 16, 2003; Page A09.

Call for Posters: FHSLA

Come to the FHSLA 2003 Annual Meeting, June 4-6, 2003, at the Tradewinds Resort, St. Petersburg Beach, Florida. MARK YOUR CALENDARS. The theme of this convention is "Information for the Health of It."

DEADLINE FOR POSTER SUBMISSION: April 30, 2003

Posters need not be original for FHSLA and can be submitted for any of the following themes:



- * Diagnosing Your Information Health Care Needs
- * After the Apple – What Comes Next?
- * Keeping Your Library Healthy
- * Diagnosing Your Information Providers
- * The Worm in the Apple

Brochures will be mailed out shortly containing program information. Meeting information will also be posted at the FHSLA website as it becomes available:

<http://www.library.health.ufl.edu/fhsla/conferences/annual2003.html>

Information regarding the Tradewinds Resort is located at:

<http://www.tradewindsresort.com/index.cfm>

For further information contact:

John Orriola, 813-974-2990, jorriola@hsc.usf.edu

Ellen Stanley, 813-974-0956, estanley@hsc.usf.edu

--John Orriola, jorriola@hsc.usf.edu, Shimberg Health Sciences Library, University of South Florida

Medical Digital Reference covering Health Questions

The Pacific Southwest Region of the National Network of Libraries of Medicine is working with network medical librarians from hospitals, academic health science libraries and special libraries to answer your health-related questions via the 24/7 Reference software. Currently, the librarians with the Medical Digital Reference Project (MDRP) are available from 8 am to 5 pm, Monday through Friday, Pacific time. This pilot was based on a similar service set up in California by county law librarians.

If you are using 24/7 Reference, feel free to transfer your patrons with health and medical questions to us. If the medical librarians are not available, you can forward the question for later follow up. The medical librarians are not currently taking questions directly from patrons.

The medical librarians are network members of the Pacific Southwest Region of the National Network of Libraries of Medicine, (<http://nnlm.gov/psr>) which covers Arizona, California, Nevada, Hawaii and the Pacific Islands. Some of the participating libraries are the Norris Medical Library at the University of Southern California, Lane Library at Stanford, California Pacific Medical Center in San Francisco, California School of Professional Psychology, University of California, Davis, Oakland Public Library, UCLA Biomedical Library and Olive View Medical Center. The University of Arizona, Loma Linda University, and the VA Long Beach will be joining us soon to cover more hours.

For more information contact: Kay Deeney, Education & Exhibit Coordinator, PSRML at kdeeney@library.ucla.edu or 310-206-0525.

--Kay Deeney, kdeeney@library.ucla.edu, Education & Exhibit Coordinator, PSRML

SC/MLA 2003 and FHSLA 2004 Meeting Website



The Louis Calder Memorial Library and the Miami Health Sciences Library Consortium are pleased to announce the debut of the website for the October 9-13, 2003 meeting of the Southern Chapter/MLA and the Florida Health Sciences Library Association in elegant, historic Coral Gables, Florida aka the “City Beautiful.” Please visit us at <http://calder.med.miami.edu/SCMLA2003/>.

The Local Arrangements, Program and Continuing Education Committees are well along in their efforts to make this return to the Miami area as memorable as the Chapter's first meeting in "The Magic City" area in 1984. Very reasonable rates have been arranged for a four-star, four-diamond hotel in the heart of Coral Gables - take the hotel's virtual tour on the website, <http://calder.med.miami.edu/SCMLA2003/> (click on “Omni Colonnade” and then on “Virtual Tour”).

Contracts with the Vizcaya Museum and Gardens and a world-class caterer have been signed for the banquet on October 12th and planning is underway for tours to many of Miami's unique attractions.

A rich and wide array of continuing education courses have been organized for the first and last days of the meeting, October 10th and 13th. Although not yet complete, invited speakers, panel moderators, and other program offerings currently include:

- ➔ Robert G. Brooks, M.D., Associate Dean for Health Affairs, Florida State University College of Medicine, and Principal Investigator, Center on Terrorism and Public Health
- ➔ Henry L. Lemkau, Jr., M.L.S., J.D., Professor and Chairman, Department of the Louis Calder Memorial Library and Biomedical Communications, University of Miami School of Medicine
- ➔ Barbara Schearer, Library Director, FSU School of Medicine
- ➔ Poolside chats on current topics
- ➔ Contributed paper and poster sessions

See you in Miami!

--Henry L. Lemkau, hlemkau@med.miami.edu, Chair, Local Arrangements Committee

Survey Input Needed

I am conducting a research survey intending to find basic information about the interaction between the Gay/Lesbian/Bisexual/Transgendered (G/L/B/T) healthcare professional and the medical librarian. Some information about health information needs of G/L/B/T health consumers will also be investigated.

Anonymity of participants will be fully respected. Randomly selected members of the Gay & Lesbian Medical Association are being asked to participate. Also, there will be general distribution to subscribers to the e-mail discussion group of the Lesbian, Gay, Bisexual and Transgendered Health Science Librarians' Special Interest Group of the Medical Library Association as well as that Association's MLA-List. A few other general medical library e-mail discussion groups will be invited to participate. I would like to have as many people participate as possible in order to make the data I gather as meaningful as possible.

I practiced pediatrics for 20 years before becoming a medical reference librarian. I have written many articles in the medical and library literature, some of my work on Gay topics. I also happen to be Gay.

The survey is located at this Web address: <http://www.surveymonkey.com/s.asp?u=76105158252>

--Charles R. Fikar, MD, DABP, MSLS, AHIP, crfikar@optonline.net, Health Sciences Library, Nassau University Medical Center

Publishing Opportunities

In the past several months, there have been numerous calls for Papers, Articles, and Reviewers. Here's the listing:

[Academic Exchange Quarterly](#)

[The Acquisitions Librarian](#)

[Clinical Medicine & Research](#)—"Resources in Review"

[Info Career Trends](#)

[The Journal of Interlibrary Loan](#)

[Journal of Internet Cataloging](#)

[Journal of Hospital Librarianship](#)

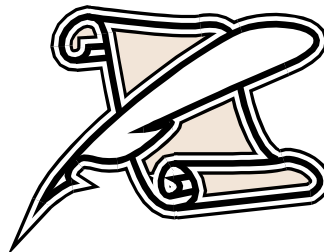
[Medicine on the Net](#)

[MLA News](#)—"Technology Column"

[The Reference Librarian](#)

[Reference Reviews](#)

[Sea Currents](#)



SC/MLA: see [**Call for Papers & Posters: SC/MLA**](#)

Lastly, MLA has new guidelines for books and quick guides at:

<http://www.mlanet.org/publications/books/bookguid.html>

Online Continuing Education Courses

Simmons College - Graduate School of Library and Information Science – Office of Continuing Education is offering the following ONLINE workshops for Spring 2003:

- Anime & Manga: The Essential Guide
- Computer Graphics and Scanning Basics
- Documentation: The First Step Towards Knowledge Management
- Dreamweaver 101
- Eye/I Appeal: 30 Days of Delights
- **How Libraries Can Provide Support for Individuals and Families with Special Needs**
- Power Google: Top 20 Tips for Rapid Ready Reference
- Reading Books, Using E-Books
- Teaching & Learning Online: Creating Web Based Tutorials NEW!
- Teens.library: Developing Internet Services for Teens
- The Newbery Award: An Experience
- Using the Web to Find Pictures, Graphics, and Images
- Webquests at the Library
- Website Project Management: Outlining Your Web Project Before You Code

For a preview of these workshops: http://www.simmons.edu/gslis/ce/online_preview_spring03.html

For information about all our workshops: <http://www.simmons.edu/gslis/ce/index.html>

--Jody Walker, gslisce2@SIMMONS.EDU, Simmons College, Boston, MA

IFLA Meeting in Berlin

For further details and important deadlines (**May 1st** is early registration), go to:

<http://www.ifla.org/IV/ifla69/index.htm>. (In case you didn't know, IFLA has changed its name to the World Library and Information Congress.)

FHSLA Membership Dues

If you haven't renewed your FHSLA membership, it's not too late. Just fill out the membership form (at the end of every ALERT), print it out from the website and fax it, or fill it out online from the PDF:

<http://www.library.health.ufl.edu/fhsla/membership/index.html>.

Annual dues for this year are only \$15.



Make Allison's day—send her your dues!

News: USF

Rose Bland, **Allison Howard**, **Karen Keene**, and library director **Beverly Shattuck** attended the 2002 annual FHSLA meeting in historic St. Augustine. **Allison Howard** and **Rose Bland** presented a poster presentation titled, *Measurement of Electronic Resources*. **Rose Bland** was the facilitator for the PDA Roundtable discussion.

John Orriola, **Danny O'Neal**, and **Beverly Shattuck** attended the 2002 Medical Library Association meeting in Dallas, TX.

In Spring 2002, the USF College of Medicine, USF Library System and the Hinks and Elaine Shimberg Health Sciences Library hosted a reception for local author and benefactor, **Elaine Shimberg**. Her presentation, *Your Secret Prescription: How Lay Healthcare Books Can Help Your Practice*, was well-attended by members of the University and Tampa Bay community. Mrs. Shimberg has authored and co-authored numerous books on consumer health. This program was part of the USF Library's "An Afternoon With..." guest speaker series.

Karen Keene attended the March 15th, 2002 TaBaMLN vendor fair hosted by the Bayfront Medical Center in St. Petersburg. Over fifteen vendors displayed new equipment and services to the crowd of librarians and hospital staff who attended.

Congratulations to the **Shimberg HSL** for their winning entry in the 2002 MLA PR Swap 'N Shop. They captured second place in the category of ongoing campaigns by academic libraries for their use of multiple promotional resources.

Cheryl Dee, Ph.D., attended the National Library of Medicine's fellowship program in Medical Informatics at Woods Hole, May 26-June 2, 2002. The program familiarizes the participants with the application of information science and computer technologies in health care, biomedical research and health professions education. She was also awarded an NLM grant, see [FHSLA Member Awarded NLM Grant](#).

--Karen Keene, kkeene@hsc.usf.edu, Shimberg Health Sciences Library, University of South Florida, Sarah Gable, Sarah@MED.SC.EDU, School of Medicine Library, University of South Carolina; Dr. Cheryl Dee, cdee@chuma1.cas.usf.edu, University of South Florida/Florida State University; Addajane L. Wallace, addajane.wallace@halifax.org, Halifax Medical Center

Electronic Tips & Tricks

Mouse Shortcut

Left-click twice on a word to highlight it; triple-click to highlight the entire paragraph.

PubMed Citation URL

Ever been to those snazzy webpages that provide a link to the article's PubMed record? You can do the same thing for your webpages. To get the direct URL to a PubMed citation, go to PubMed, <http://www.pubmed.gov>, and search for the article (by title, author, etc., whichever method you use). Once you see the article citation, search again, but with the article's PMID number (last line of the article's citation). When the citation is displayed again, click on "Details" and "URL." The citation's URL is in your browser's address bar, ready to be placed in your webpages and Word or PDF documents.

Customizing Bullets in Word

Why settle for the boring black bullets? You can insert webdings and colored bullets in Word. Here's how: From Word, choose "Format" and "Bullets and Numbering." Choose which bullet shape you want to replace with another. (Don't worry, you can always change it back to the default by clicking on "Reset" and then "Yes.") Click on "Customize" and "Bullet." (If you want color bullets, choose "Picture" instead of "Customize.") Click on the pictures to preview them—click on the drop-box for additional image choices, such as Symbol, Webding, Wingdings 1, Wingdings 2, Wingdings 3. Choose "OK" for the bullet you want.

Error Message for Sound Files: Could not locate the specified clip

Not only music is on the web. There are also heart and lung sounds and other audio sound samples you can listen to. If you get a RealOne Player error message saying that it "could not locate the specified clip," don't despair. Here's three methods to try:

If using the Microsoft Internet Explorer browser, try Method 1:

Method 1. Open the Netscape Navigator browser, and try to access the website and its sound clip from there.

However, if you'd prefer to use Internet Explorer, try Method 2 or 3:

Method 2. From the browser's toolbar, choose "Tools" then Internet Options." At the "Temporary Internet Files" option (under the "General" tab), click on the "Delete Files" button. Click "OK" in the delete files dialog box; you don't need to check off the "delete all offline content" box. After a few minutes, all the temp files should be deleted. Now, try to access the sound clip again.

Method 3. Right click on the sound link, choose "Save Target As..." choose where you want to save it, and click on the "Save" button. To open the file, from your browser's "File" option, choose "Open," and "Browse." It should display the same area where you saved it in; choose "All Files" in the "Files of Type" dropbox to see your sound clip, double-click on it and choose "OK" to listen.

--Tanya Feddern, tfeddern@med.miami.edu, Calder Memorial Library, University of Miami

Call For Presentations: SC/MLA

You are invited to submit proposals for contributed papers and posters for the 2003 Southern Chapter of the Medical Library Association Annual Meeting in Coral Gables, FL, October 9 -14. Our theme is: Coming About-Designs for the Future, Reflections from the Past. "Coming About" is a nautical term which means to turn or change a boat's direction into a more favourable direction. Presentations should relate to the theme of the meeting and should emphasize new directions being taken by information professionals, including distance learning, electronic resources, cultural competency, evidence-based medicine, and outreach.

...Call for Presentations: SC/MLA, continued on page 21

...continued from page 20, *Call for Presentations: SC/MLA*

Proposals should be submitted in the format of structured abstracts (See <http://hubnet.buffalo.edu/mla/abstract.html>). Each abstract may be up to 300 words in length and must include a list of authors, their institutional affiliations, e-mail addresses, and phone numbers as well as an indication of whether the submission is a Contributed Paper or Poster proposal.

The deadline for submissions is April 2, 2003.

Contributed Papers

Each paper will be 15 minutes in length. Email abstracts to Lyn Dennison using a Word or WordPerfect attachment. Ldenniso@mail.mcg.edu

Posters

Presenters should plan to be available to staff posters during a one-hour poster session. Posters will remain up for viewing for the remainder of the conference. Electrical connections will be available. Email abstracts to Jan Haley [615-222-6658] using a Word attachment. jhaley@stthomas.org
--Mary Fran Prottzman, Program Chair, mary.prottzman@se.amedd.army.mil

Jobs!

Head, Reference & Instructional Services

The position description at the Green Library at Florida International University (University Park Campus) are at: <http://www.fiu.edu/~library/news/fiujobs.html>

Reference and Education Services Librarian

The Louis Calder Memorial Library of the University of Miami School of Medicine seeks a creative, energetic librarian who enjoys teaching and working in a team environment in a reference and education department with 5 faculty librarians of a major academic health sciences center with one of the nation's busiest hospitals, largest research programs and state-of-the art information resources.

Overall duties of this position include assisting with (1) planning and implementing the library's innovative "Evidence-based Medicine/Use of the Biomedical Literature" component of 1 of the 4-year longitudinal themes of the School of Medicine's new outcomes-based curriculum begun in the fall 2001 and (2) delivering end-user instruction, computer search, and ready reference services to health care providers, staff and consumers at the medical center and throughout South Florida.

Specific duties of this position include continuing to plan formal instruction, together with other library and school faculty and to implement team-developed strategies to train 2nd-year medical students to critically appraise the literature to effectively and appropriately apply information retrieved to a particular patient care problem. Individuals with an ALA-accredited MLS degree; excellent interpersonal, communication, analytical, and organizational skills; and related education and experience, such as a background or interest in epidemiology or evidence-based medicine and Web-based instructional material are encouraged to apply.

Salary: \$40,000 minimum. Benefits include TIAA/CREF, 22 vacation days, 5 floating holidays, a choice of medical and dental plans, and tuition remission. This librarian, assistant professor faculty position, which reports directly to the director for reference and education services, is available 04/01/03. Please send resume and 3 references to Joaquin (Joe) Arriaga, Director for Reference and Education Services, Louis Calder Memorial Library, University of Miami School of Medicine, P.O. Box 016950 (R950), Miami, FL 33101; fax, 305.325.9670. AAE/EOE (207)

FHSLA ALERT Publication History

(1) July 1984 1(2) October 1984 1(3) January 1985	7(1) Fall 1990 7(2) Winter 1990 7(3) Spring/Summer 1991 7(4) Fall/Winter 1991	Spring 1998 Fall 1998
2(1) No Date 2(2) December 1985 2(3) No Date	8(1) Spring 1992 8(2) Fall 1992 8(3) Spring 1993	Spring 1999 Summer 1999
3(1) No Date 3(2) 1986 3(3) 1987	9(1) Fall 1993 9(2) Winter 1994 9(3) Summer 1994	Spring 2000 Fall 2000
4(1) Summer 1987 4(2) Fall 1987 4(3) Spring 1988	10(1) Fall 1994 10(2) Spring 1995 10(3) Summer 1995	Spring 2001 16(2) Summer 2001 16(3) Fall/Winter 2001
5(1) Fall 1988 5(2) Winter 1989 5(3) Spring 1989	11(1) Fall 1995 11(2) Winter 1996 11(3) Summer 1996	17(1) Spring 2002 17(2) Winter '02 - Spring '03
6(1) Fall 1989 6(2) Winter 1990 6(3) Spring 1990	Winter 1997 Summer 1997	

--Pam Neumann, Director, Borland Library, University of Florida Health Science Center
pneumann@ufl.edu

Florida Health Sciences Library Association 2002

OFFICERS

President	Pamela Sherwill-Navarro	Pam@library.health.ufl.edu
Vice President/Program Chair	Karen Roth	karen.roth@baycare.org
Secretary	Sandra Canham	scanham@ufl.edu
Treasurer	Allison Howard	ahoward@hsc.usf.edu
Immediate Past President	Naomi Elia	naomie@orhs.org

COMMITTEE CHAIRS/APPOINTED POSITIONS

Editor	Tanya Feddern	tfeddern@caldmed.med.miami.edu
Archivist	Mel Gutsell	(305) 243-6931
CE Coordinator	Pat Clark	clarkp@allkids.org
Membership	Deborah Lawless	DLAWL001@stvincentshealth.com
Membership Directory Editor	John Orriola	jorriola@hsc.usf.edu
Nominating	Karen Roth	karen.roth@baycare.org
Strategic Planning	Dorothy Kelley	dottie_kelly@suncoasthealthcare.com
Union List Coordinator	Jan Booker	jan.booker@lrmc.com
Listserv Manager	Rae Jesano	Rae@library.health.ufl.edu
Webmaster	Tara Tobin-Cataldo	Tara@library.health.ufl.edu

FLORIDA HEALTH SCIENCES LIBRARY ASSOCIATION
Florida Health Sciences Library Association (FHSLA)
2003 MEMBERSHIP APPLICATION

available online: <http://www.library.health.ufl.edu/fhsla/membership/f99mem.html>

1. Please provide the following information for the membership database:

Name: _____
Position/Title: _____
Library: _____
Institution: _____
Address: _____
City: _____ State: _____ Zip: _____
Phone: _____ Fax: _____
Email: _____

2. Please indicate the type of library where you are employed:

Academic Health Other _____

3. Please indicate if you are a member of other library associations:

SC/MLA MLA SLA FLA Other _____

4. Are you an AHIP Member?

No Distinguished Senior Member Provisional

5. Are you interested in serving as a FHSLA officer? Yes No

Office Preference:

Vice President/President-Elect Secretary Treasurer

6. Are you interested in serving on an FHSLA Committee? Yes No

Committee Preference:

Continuing Ed Membership Newsletter Program Strategic Planning

- Dues for 2003 are \$15.00 for the calendar year January-December
- Dues must have been paid by May 31, 2003 for your name to appear in the 2003 membership directory
- Make checks payable to: FHSLA
- Return this form with check to:

Allison Howard
Shimberg Health Sciences Library
University of South Florida
12901 Bruce B. Downs Blvd.
MDC 31
Tampa, FL 33612-4799